

TECHNICAL DATA

Fluke Ti90 Infrared Camera



Key features

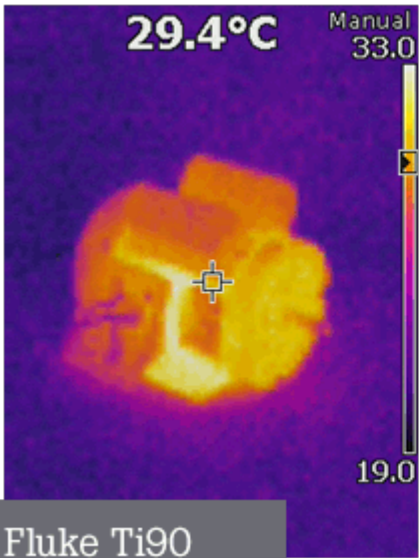
- The only wireless industrial infrared camera in its price class¹ – take advantage of the benefits of Fluke Connect® by seamlessly gathering and sharing inspection results instantly
- Superior image quality, up to 84% better spatial resolution than other competitive models in this price class¹
- 80 x 60 resolution
- Removable 4 GB SD memory card
- 8 GB Fluke Connect® wireless SD Card
- Get context for the infrared image by switching to the full visible (IR-Fusion® AutoBlend™ mode and Picture-in-Picture available in SmartView® software)
- 2 megapixel built-in digital camera
- 3.5 in LCD
- Smart Battery System - Lithium ion smart battery pack with five-segment LED display to show charge level
- Rugged, lightweight, point-and-shoot infrared camera

¹ Class is defined as an industrial handheld infrared camera in the same price range based on MSRP as of May 1, 2014.

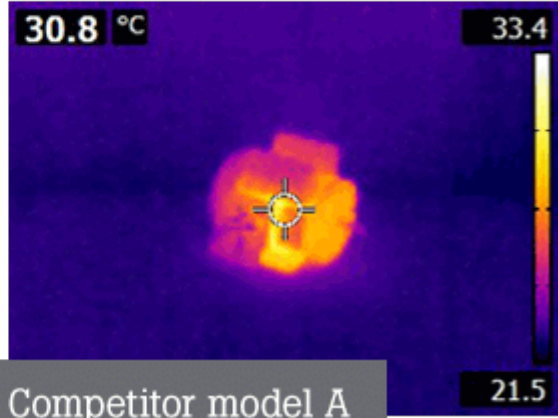
Product overview: Fluke Ti90 Infrared Camera

BETTER detail, BIGGEST display, BEST VALUE in their class¹

Images were captured under the same conditions and from the same distance of 1.2 m (4 ft) by a professional thermographer and exported in a JPEG format. Except for the captions in the lower, left-hand corner of each image, images are displayed as saved by each infrared camera.



VS



Fluke Ti90

Competitor model A

Features rich affordability at your fingertips with DIFFERENCES YOU CAN SEE.

- See more detail with 84% better spatial resolution¹ – increases the detail in your inspection target
- Easier to see potential problems with a 32% larger display¹



Prevent unexpected loss of power with pop in/pop out replaceable smart batteries with handy LED charge level indicator.



Easy image transfer and more flexibility with replaceable 12 GB of memory capacity (8 GB Fluke Connect® wireless card and 4 GB memory card).



Fluke Connect® compatible - save and share measurements faster and easier from the field².

¹Compared to industrial handheld infrared cameras with list prices up to \$2,000.00 (USD) as of September 17, 2014.

²Within provider's wireless service area.

Specifications: Fluke Ti90 Infrared Camera

Key Features	
IFOV (spatial resolution)	5.6 mRad
Detector resolution	80x60 (4,800 pixels)
Field of view	19.5 °H x 26 °V
Minimum focus distance	46 cm (18 in)
Focus system	Focus free (fixed focus)
Wireless connectivity	Fluke Connect™ app compatible with included wireless SD Card ¹
IR-Fusion® technology	Only full visible on camera (IR-Fusion® AutoBlend™ mode available in SmartView® software)
Display	3.5 inch diagonal (portrait format)
Design	Rugged, lightweight, ergonomic design for one-handed use
Thermal sensitivity (NETD)	≤ 0.15 °C at 30 °C target temp (150 mK)
Temperature measurement range	-20 °C to +250 °C (-4 °F to +482 °F)
Built-in digital camera (visible light)	2 megapixel industrial performance
Frame rate	9 Hz
Data Storage and Image Capture	
Extensive memory options	Removable 4 Gb SD memory card and 8 Gb wireless SD card (where available); direct download via USB-to-PC connection
File formats image	Non-radiometric (.bmp) or (.jpeg) or fully-radiometric (.is2) No analysis software required for non-radiometric (.bmp, .jpg) files
SmartView® software	SmartView® software, Fluke Connect™ ¹ , and SmartView® Mobile App—full analysis and reporting software
Battery	
Batteries (field-replaceable, rechargeable)	One lithium ion smart battery pack with five-segment LED display to show charge level
AC battery charging system	In-imager charging. Optional two-bay battery charger or optional 12 V automotive charging adapter
Temperature Measurement	
Accuracy	± 2 °C or 2 % (at 25 °C nominal, whichever is greater)
On-screen emissivity correction	Yes (both value and table)
On-screen reflected background temperature compensation	Yes
General Specifications	
Color palettes	3 standard: Ironbow, Blue-Red, Grayscale
Drop	Engineered to withstand 2 meter (6.5 feet) drop
Size (H x W x L)	28.4 cm x 8.6 cm x 13.5 cm (11.2 in x 3.4 in x 5.3 in)



Weight (battery included)	0.73 kg (1.6 lb)
Enclosure rating	IP54 (protected against dust, limited ingress; protection against water spray from all directions)
Warranty	Two-years (standard), extended warranties are available
Notes	
¹ Fluke Connect™ not available in all countries	



Preventive maintenance simplified. Rework eliminated.

Save time and improve the reliability of your maintenance data by wirelessly syncing measurements using the Fluke Connect® system.

- Eliminate data-entry errors by saving measurements directly from the tool and associating them with the work order, report or asset record.
- Maximize uptime and make confident maintenance decisions with data you can trust and trace.
- Access baseline, historical and current measurements by asset.
- Move away from clipboards, notebooks and multiple spreadsheets with a wireless one-step measurement transfer.
- Share your measurement data using ShareLive™ video calls and emails.

Find out more at flukeconnect.com



All trademarks are the property of their respective owners. WiFi or cellular service required to share data. Smartphone, wireless service and data plan not included with purchase. First 5 GB of storage is free. Phone support details can be viewed at fluke.com/phones.

Smart phone wireless service and data plan not included with purchase. Fluke Connect is not available in all countries.

Fluke. Keeping your world up and running.®

Fluke Corporation
PO Box 9090, Everett, WA 98206 U.S.A.

For more information call:
In the U.S.A. (800) 443-5853
In Canada (800) 36-FLUKE
From other countries +1 (425) 446-5500
www.fluke.com

©2023 Fluke Corporation.
Specifications subject to change without notice.
10/2023

Modification of this document is not permitted without written permission from Fluke Corporation.